

**Revotik**<sup>®</sup>

**2024** PRODUCT  
**CATALOG**

Revo Infratech USA Ltd.



L3

Leading L2/L3 function:  
LACP, IPv6, RIP, OSPF



Open to  
Any Brand ONU

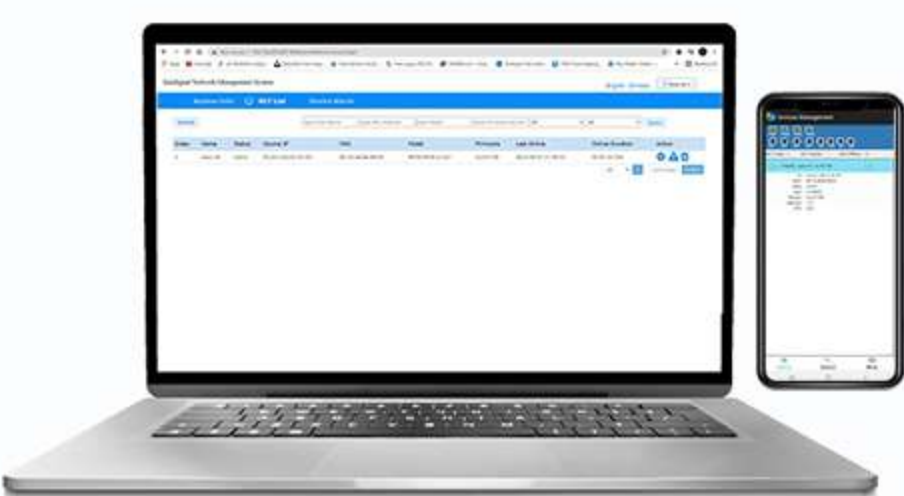


Mobile App Monitor



BSNL SUPPORT

3  
YEAR  
Warranty



#### DESCRIPTION

- Support 10 G Uplink
- Support WEB & APP management
- Support OSPF & RIP dynamic routing
- Support unify management of date
- VoIP, Wi-Fi and CATV service
- It can support Under 1:128 splitter ratio



Model: RV814



Model: RV818



Model: RV818B

GPON OLT



L3

Leading L2/L3 function:  
LACP, IPv6, RIP, OSPF



Open to  
Any Brand ONU

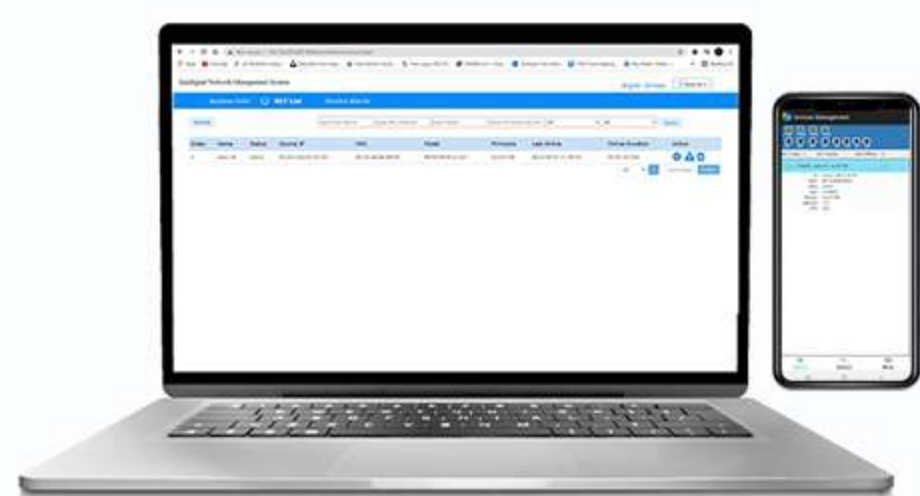


Mobile App Monitor



BSNL SUPPORT

3  
YEAR  
Warranty



#### DESCRIPTION

- Support 1/10 G Uplink
- Support WEB & APP management
- Support OSPF & RIP dynamic routing
- Support unify management of date
- VoIP, Wi-Fi and CATV service
- It can support Under 1:64 splitter ratio

GEPON OLT





**RVEPON101**



**RVOX101**



**RVXPON101**



**RVXPON104**



**RVXPON101W**



**RVXPON102WAC**

## DATA xPON

Item	1GE ONU	1GE xPON	1GE xPON	4GE xPON	1GE WiFi xPON	2GE WiFi ac xPON
<b>Model</b>	RVEPON101	RVOX101	RVXPON101	RVXPON104	RVXPON101W	RVXPON102WAC
<b>Class</b>	Regular	Regular	Regular	Regular	Regular	Regular
<b>PON Port</b>	1	1	1	1	1	1
<b>GE Port</b>	1	1	1	4	1	2
<b>FE Port</b>	-	-	-	-	-	-
<b>Can Access</b>	EPON	EPON/GPON	EPON/GPON	EPON/GPON	EPON/GPON	EPON/GPON
<b>Compatible OLT</b>	HW, ZTE, Etc	HW, ZTE, Etc	HW, ZTE, Etc	HW, ZTE, Etc	HW, ZTE, Etc	HW, ZTE, Etc
<b>Mode</b>	Routing	Bridge	Routing	Bridge	Routing	Routing
<b>Chipset</b>	ZTE	REALTEK	ZTE	CORTINA	REALTEK	REALTEK
<b>WiFi</b>	-	-	-	-	300 Mbps	1200 Mbps
<b>Management</b>	WEB/CLI	WEB/CLI	WEB/CLI	WEB/CLI	WEB/CLI	WEB/CLI







**RVXPON302W**



**RVXPON302WAC**



**RVXPON201**



**RVXPON202W**

## VOICE & CATV xPON

Item	1GE+1FE+1Pots WiFi xPON	2GE+1Pots WiFi ac xPON
Model	RVXPON302W	RVXPON302WAC
Class	Regular	Regular
PON Port	1	1
GE Port	1	2
FE Port	1	-
Phone Port	1	1
USB Port	-	-
Can Access	EPON/GPON	EPON/GPON
Compatible OLT	HW, ZTE, Etc	HW, ZTE, Etc
Mode	Routing	Routing
Chipset	REALTEK	REALTEK
WiFi	300 Mbps	1200 Mbps
Management	WEB/CLI	WEB/CLI

Item	1GE CATV xPON	1GE+1FE CATV WiFi xPON
Model	RVXPON201	RVXPON202W
Class	Regular	Regular
PON Port	1	1
GE Port	1	1
FE Port	-	1
CATV Output	1	1
Can Access	EPON/GPON	EPON/GPON
Compatible OLT	HW, ZTE, Etc	HW, ZTE, Etc
Mode	Routing	Routing
Chipset	REALTEK	REALTEK
WiFi	-	300 Mbps
Management	WEB/CLI	WEB/CLI





**4/8 PORT**



**SUPPORT  
DUAL POWER**



**OUTPUT  
OPTICAL POWER 19dBm**



**JDSU**  
DUAL PUMP



**WDM-EDFA**





**RFS-94**



**RFS-98**



**RFS-100**

## SPLICING MACHINE

Model	RFS-94	RFS-98	RFS-100
Class	Regular	Regular	Regular
Splicing Mode	Clad to Clad	Core to Core	Core to Core
Display Size	4.3 inch	5 inch	5 inch
Battery	4400 mAH	5200 mAH	7800 mAH
Battery Capacity (Splicing & Heating)	220 Times	250 Times	300 Times
Splicing Time	7 – 8 Sec	7 – 8 Sec	7 – 8 Sec
Heating Time	20 – 22 sec	15 – 18 sec	10 – 13 sec
Records Storage	4000	5000	10000
Electrode Life	4000	3000	3500







**RVO3000**



**RVO1000**

## OTDR

Model	RVO3000	RVO1000
Class	Regular	Regular
Dynamic range	26~30dB	26~28dB
Wavelength	1310/1550nm	1310/1550nm
Display Size	5-inch LCD	3.5inch LCD
Attenuation dead zone	5~8m	5~8m
Event dead zone	1~3m	1m
Trace storage	80000	64000
Optical Port	FC/UPC, SC/UPC	
VFL*	10mW, CW/2Hz	
OPM**	850/1300/1310/1490/1550/1625/1650nm, Test range : -60~+10dBm	

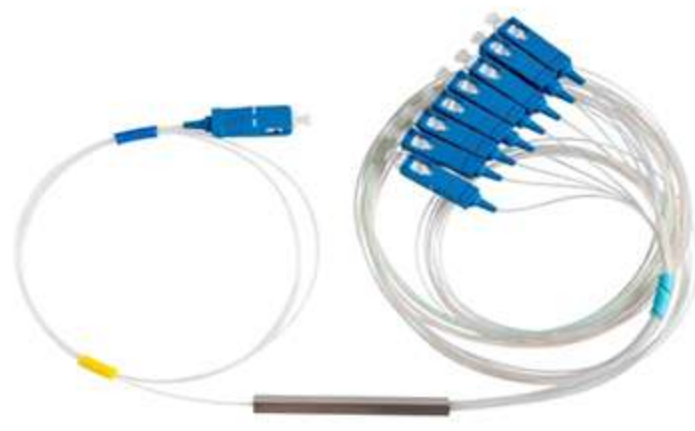




**OPTICAL  
POWER METER**



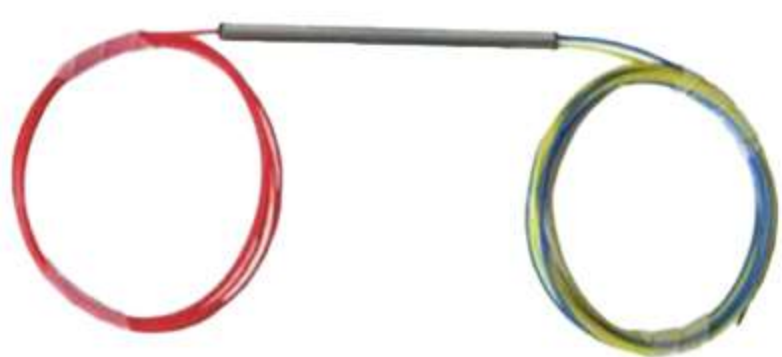
**FMS/LIU**



**STEEL TUBE  
PLC SPLITTER**



**DROP CABLE**



**RATIO SPLITTER**

## ACCESSORIES



**FAST CONNECTOR**



**CARTRIDGE TYPE  
PLC SPLITTER**



**OFC PATCH CORD**



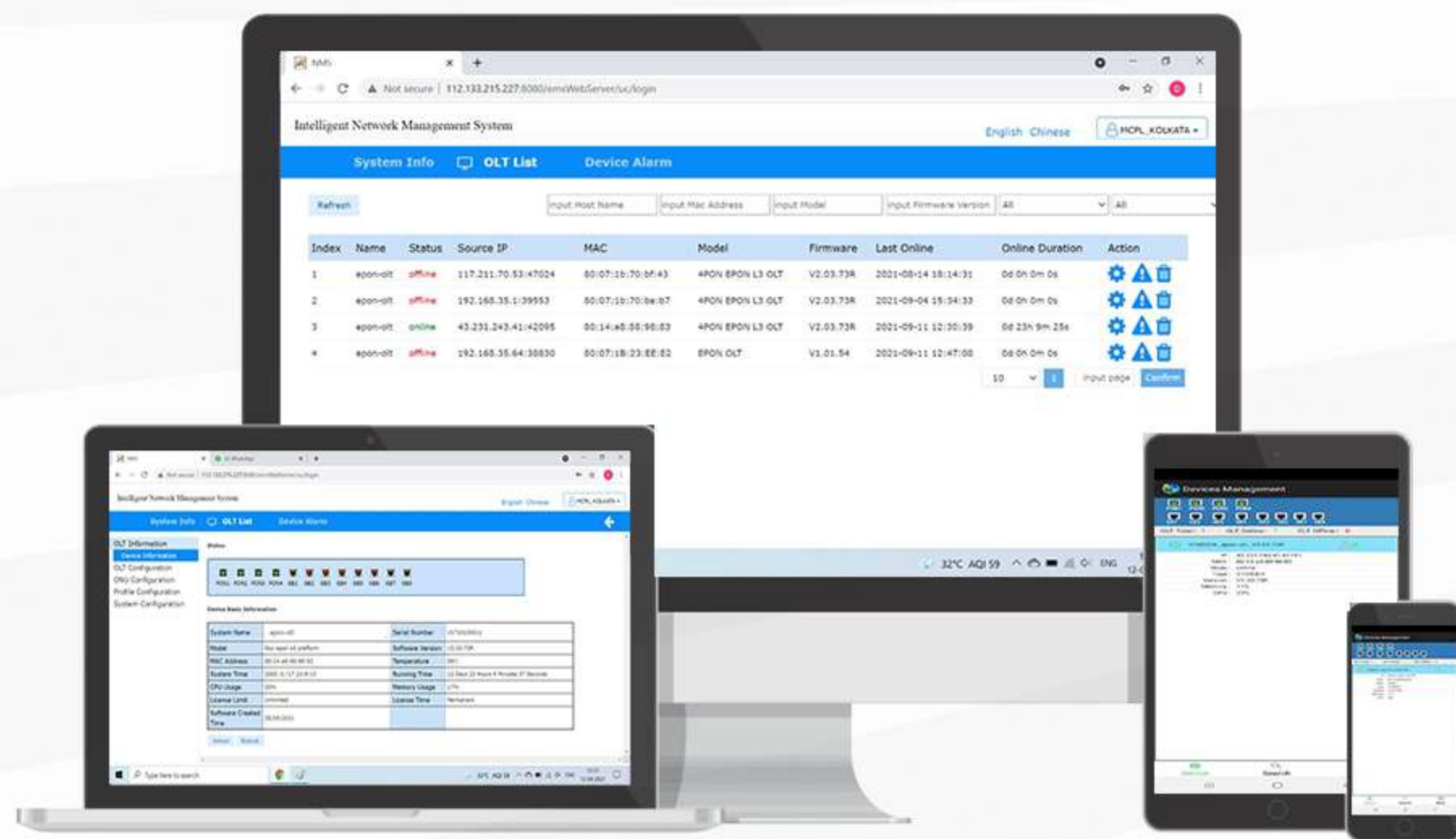
**CASSETTE TYPE  
PLC SPLITTER**



**FDA BOX**



## OLT Management Platform



### UNIFIED OPERATION AND MAINTENANCE MANAGEMENT PLATFORM

- Can manage ONU/ONT of other brands
- Support automatic discover, configure and upgrade ONU/ONT
- Support for multiple languages
- Lower operator Opex
- It can be upgraded to the controller of SDN in the future

### SUPPORT B/S AND C/S

- Users can manage directly through the WEB

### SUPPORT PHONE APP

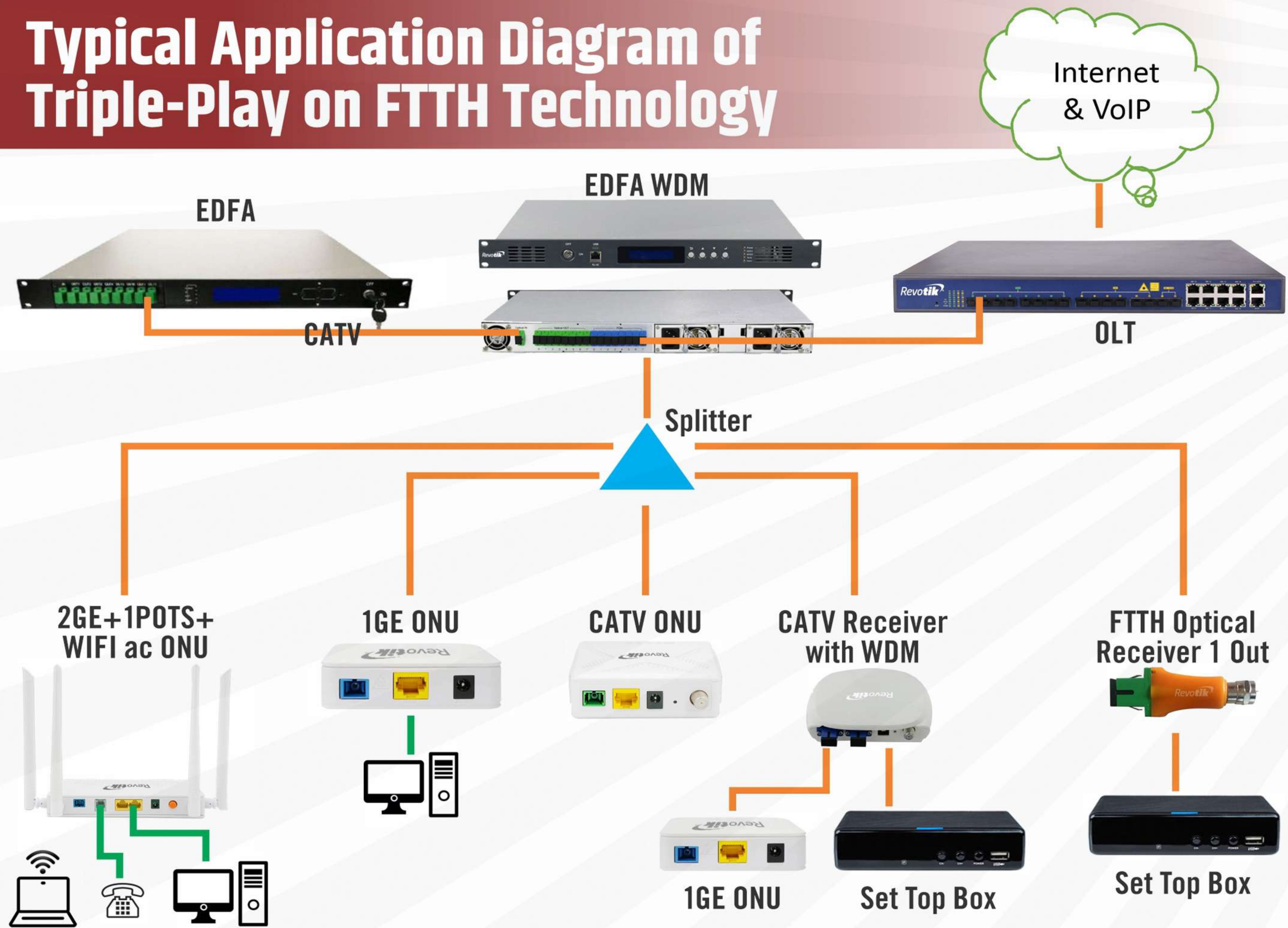
- Convenient for mobile maintenance



- Cloud EMS is designed to meet the needs of every service provider.
- Support multi-operators.
- Support C/S, B/S, APP.
- Rapid maintenance.



## Typical Application Diagram of Triple-Play on FTTH Technology



TYPICAL APPLICATION DIAGRAM



# **Revotik**<sup>®</sup>

## **Revo Infratech USA Ltd.**

1815 Highway Drive Ste #300

Cincinnati OH 45241

+1-513-501-8006

Email: [info@revotikglobal.com](mailto:info@revotikglobal.com), [www.revotikglobal.com](http://www.revotikglobal.com)

